

Connecting an additional computer to your home wireless network



This article walks you through adding an additional computer to your home wireless network.

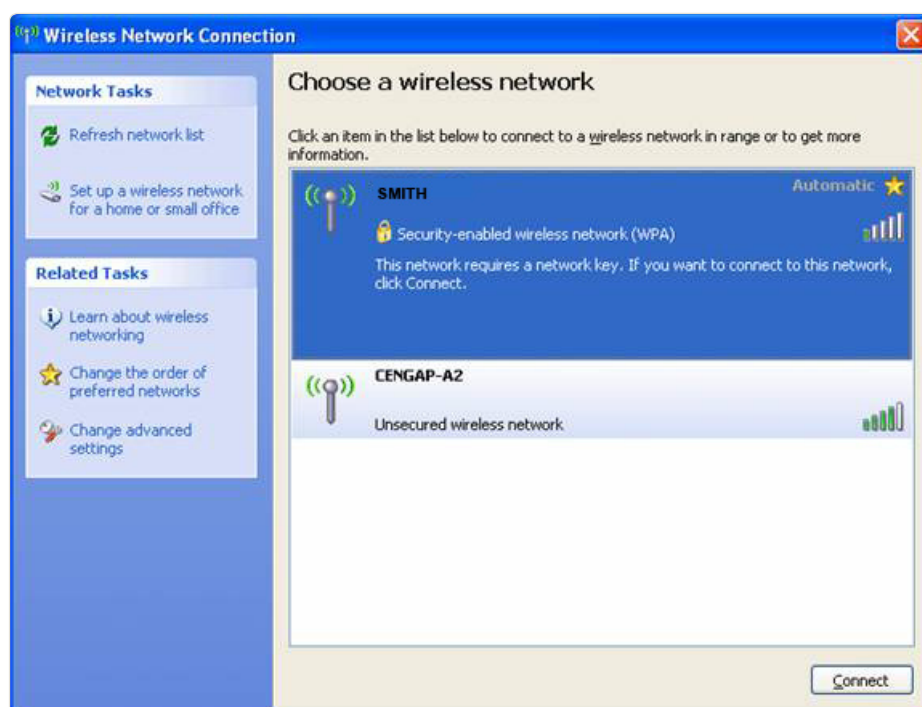
Connecting an additional computer to your wireless network is relatively easy. If Gizmo set up your wireless network for you then we will have left you with a "Wireless/Wired Network Settings Form". This form has your "Network Key" on it which you will need if you do not already know your security settings.

To connect to an available wireless network

1. Open **Network Connections** by clicking **Start, Control Panel, Network and Internet Connections**, and then clicking **Network Connections**.
2. Click the **Wireless Network Connection** icon, and then, under Network Tasks, click **View available wireless networks**.
3. Choose the wireless network from the list that appears, and then click **Connect**. If Gizmo set up your network, its name will be written on your "**Network Settings**" form.
4. If the network you choose is security-enabled, you will need to type in the key (**on your Gizmo "Wireless/Wired Network Settings Form" this is referred to as your "Network Key"**).
5. Your computer should connect to the wireless network. If you have any shared files and folders you will also be able to access them over your network.

Notes: This document only covers how to connect to a standard wireless network. For more complicated set ups you may need a Gizmotech to help you. For help, call 1300 275 449.

This article applies to:



Above: Select your wireless network from the list and click "Connect". In this case, clicking connect would require a security key as we are connecting to a security-enabled wireless network (WPA).